

SINGLE HUNG WINDOWS

WOOD

All standard single hung windows are produced in mahogany. Other specifics available upon request.

SASH LOCKS

Two sash locks are standard per window. Available in bronze, brass, oil rubbed bronze, and [insert word here] chrome.

BALANCES

Concealed, ultra-lift, heavy duty spring system is standard. Weights and chains available upon request.

WEATHER STRIPPING

Concealed, ultra-lift, heavy duty spring system is standard. Weights and chains available upon request.

GLAZING

All glazing is 7/16" impact glass with low-e coating. Insulated or tinted available upon request.

FINISH

Stain and paint finish in Sircar European Water Based Coatings, High Solvent.

NOA DRAWINGS

Attached down below.

GENERAL NOTES

1. THIS WINDOW UNIT HAVE BEEN DESIGNED AND COMPARED TO THOSE TESTED FOR HURRICANE IMPACT RESISTANCE AND ARE ACCEPTABLE FOR USE AS A HURRICANE IMPACT RESISTANT PRODUCT TO THE MAXIMUM DESIGN WIND PRESSURE SHOWN IN THE ALLOWABLE PRESSURE TABLE
2. WOOD BUCKS, BY OTHERS, MUST BE PROPERLY INSTALLED TO TRANSFER LOADS TO THE STRUCTURE
3. ALL HARDWARE AND FASTENERS SHALL BE AS LISTED, SPACED AS SHOWN IN THESE DRAWINGS. ANCHORS EMBEDMENT TO BASE MATERIAL MUST BE BEYOND WALL DRESSING OR STUCCO
4. THIS UNIT IS IN CONFORMANCE WITH THE 2014 FLORIDA BUILDING CODE FOR USE IN HVHZ AND NON-HVHZ LOCATIONS.
5. IMPACT SHUTTERS ARE NOT REQUIRED WITH THIS UNIT
6. ALL FRAME ANCHORS SECURING DOOR FRAMES TO PRESSURE TREATED BUCKS OR WOOD FRAMING SHALL BE CAPABLE OF RESISTING CORROSION CAUSED BY THE PRESSURE TREATING CHEMICAL IN THE WOOD.
7. ALL WOOD TO BE SAPELE

CORNER CONSTRUCTION

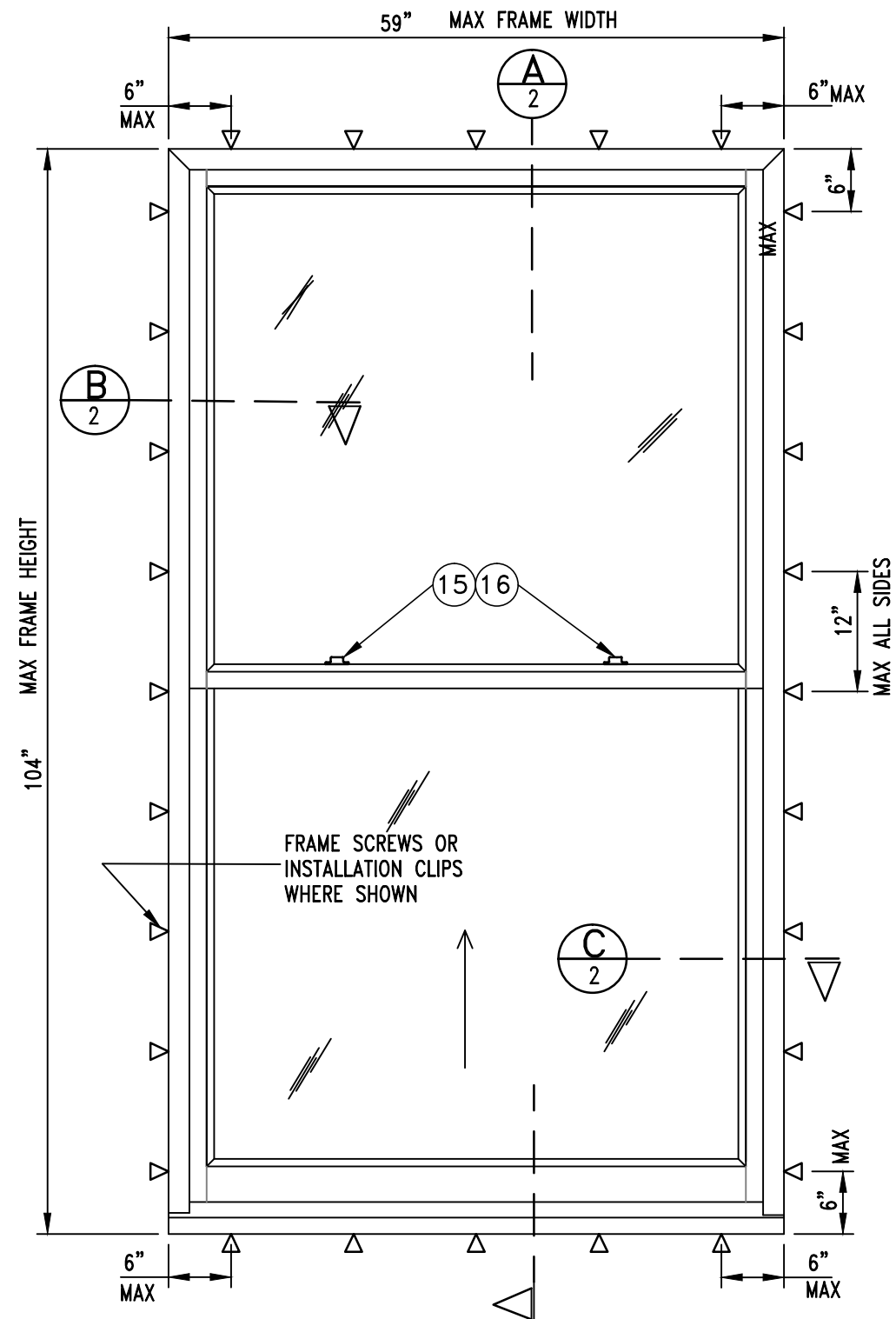
FRAME: VERTICAL MEMBERS ARE RABBETED AND JOINED TO HORIZONTAL MEMBERS WITH OF 3 EACH # 10 X 2 1/2" X ST. STL. SCREWS AND GLUED WITH WEST SYSTEM 205

SASH: CONSTRUCTED USING 3 FINGER JOINTS AND HELD TOGETHER WEST SYSTEM 205 GLUE

ALLOWABLE DESIGN PRESSURE
+/- 60 PSF

FRAME ANCHOR REQUIREMENT TABLE			
FRAME AND SILL SCREWS			
OPENING TYPE (SUBSTRATE)	FRAME/CLIP TO OPENING FASTENER TYPE	MINIMUM EMBED	MINIMUM EDGE DIST
2" X 6" (MIN) WOOD FRAME OR BUCK	NO. 12 ST. STL SCREWS	1 1/4"	3/4"
18GA (MIN) 33 KSI METAL STUD	NO. 10 GR 5 SELF TAPPING SCREWS	FULL	1/2"
1/8" TH ALUMINUM OR STEEL	NO. 10 GR 5 SELF TAPPING SCREWS	FULL	1/2"
CMU/CONCRETE	1/4" CONCRETE SCREWS	1 1/2"	2"
INSTALLATION CLIP SCREWS			
2" X 6" (MIN) WOOD FRAME OR BUCK	NO. 10 ST. STL SCREWS	1 1/4"	3/4"
18GA (MIN) 33 KSI METAL STUD	NO. 10 GR 5 SELF TAPPING SCREWS	FULL	1/2"
1/8" TH ALUMINUM OR STEEL	NO. 10 GR 5 SELF TAPPING SCREWS	FULL	1/2"

MULLION LOAD CAPACITY - PSF						
WINDOW DIMS	WIDTH	LENGTH	ANCHORS THRU WINDOW FRAME			6 CLIPS OR 8 ANCHORS THRU CONT. ANGLE
			6 ANCHORS	8 ANCHORS	10 ANCHORS	
90"	42"	90"	EXT (+)	EXT (+)	EXT (+)	EXT (+)
	48"		EXT (-)	EXT (-)	EXT (-)	EXT (-)
	54"		60	60	60	60
96"	42"	96"	60	60	60	60
	48"		60	60	60	60
	54"		60	60	60	60
104"	42"	104"	60	60	60	60
	48"		60	60	60	60
	54"		60	60	60	60



**EXTERIOR ELEVATION
SINGLE HUNG WINDOW**
SCALE 3/4"=1'-0"

WOOD FRAME TO SUBSTRATE DETAILS PER ENGINEER OF RECORDS

CONCRETE SCREWS SHALL BE ELCO OR ITW RAMSET/RED HEAD TAPCONS OR HILTI KWIK-CON 11 (HARDENED STEEL OR SS)

INSTALLATION CLIP SCREWS SHALL BE PAN HEAD OR HEX HEAD



BORGZINNER, INC
1160 W 13TH ST, UNIT 10
RIVIERA BEACH, FL 33404
PH. (561) 848-2538 FAX (561) 844-0011
http://www.borgzinner.com

CERTIFICATION

WOOD SINGLE HUNG WINDOW

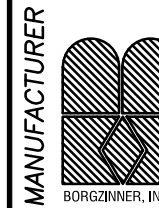
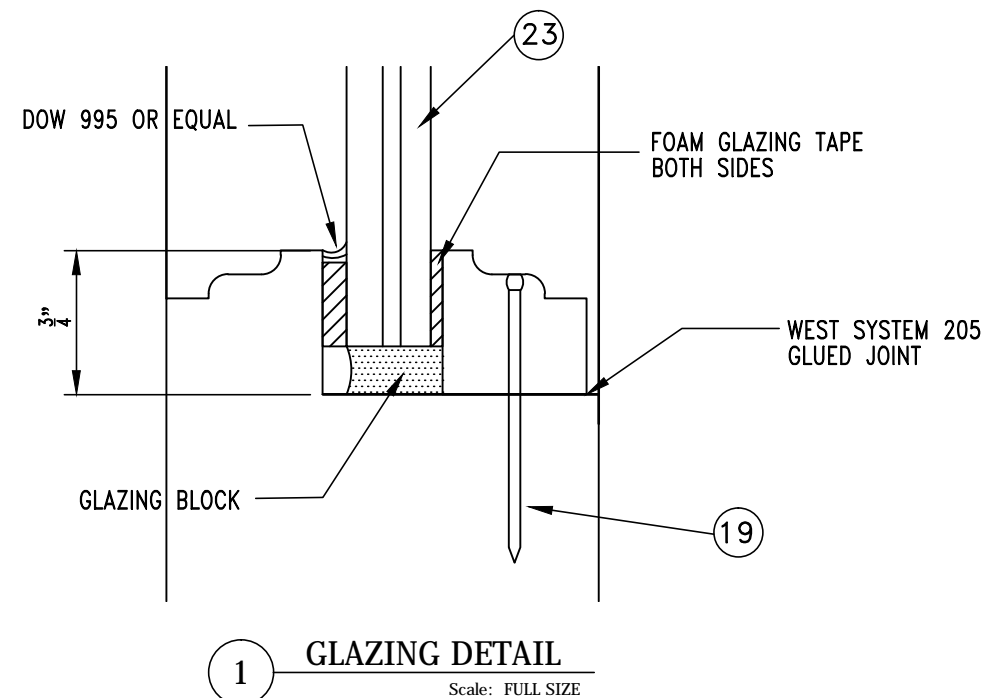
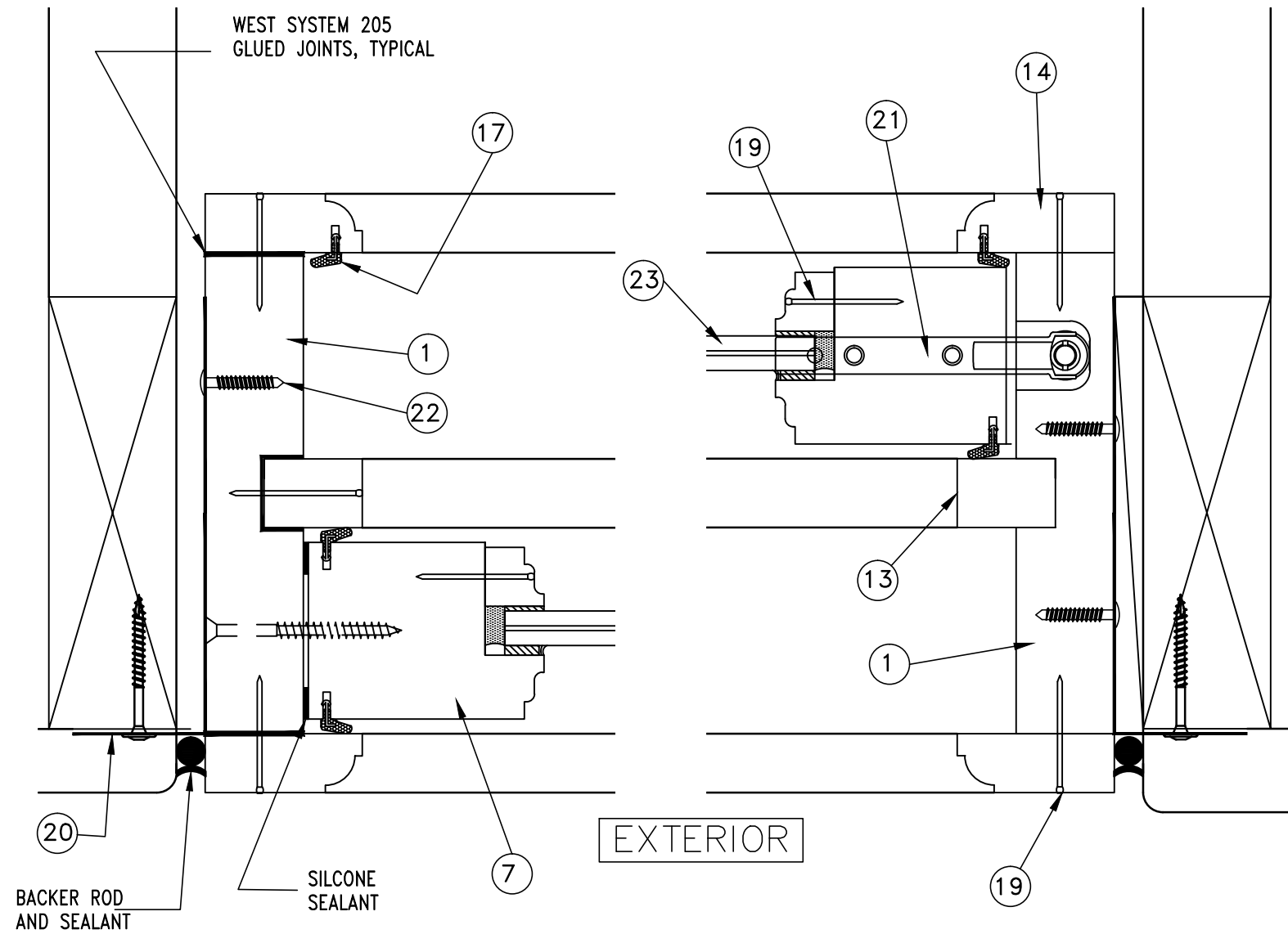
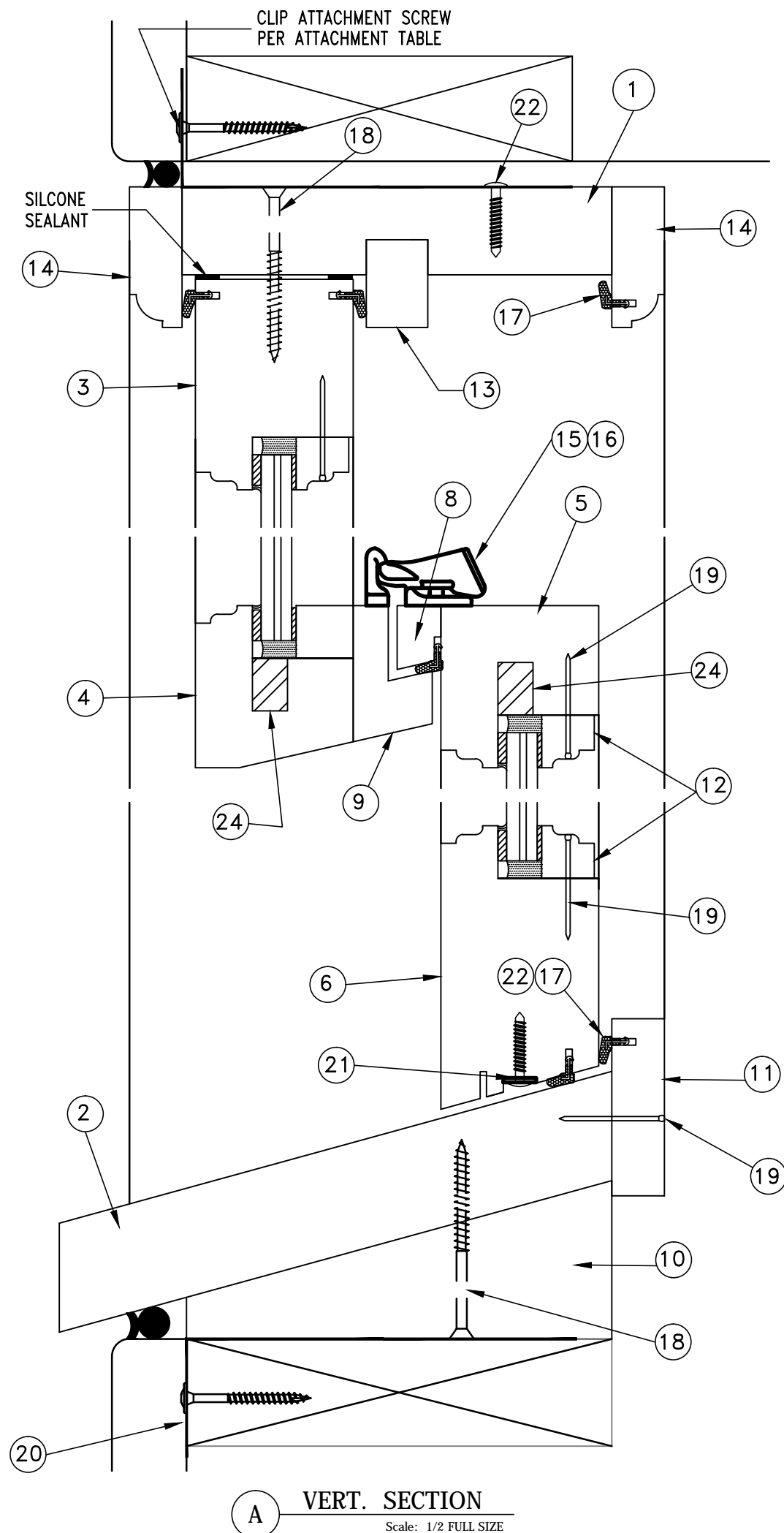
ENGINEER

REVISIONS	ISSUE	DATE	ISSUE NOTES

DRAWN BY: **DATE**
 12/02/16

DRAWING NO.

SHEET NO. 1 OF 4



BORGZINNER, INC

1160 W 13TH ST. UNIT 10
RIVIERA BEACH, FL 33404
PH. (561) 848-2538 ● FAX (561) 844-0011
<http://www.borgzinner.com>

CERTIFICATION

WOOD SINGLE HUNG WINDOW

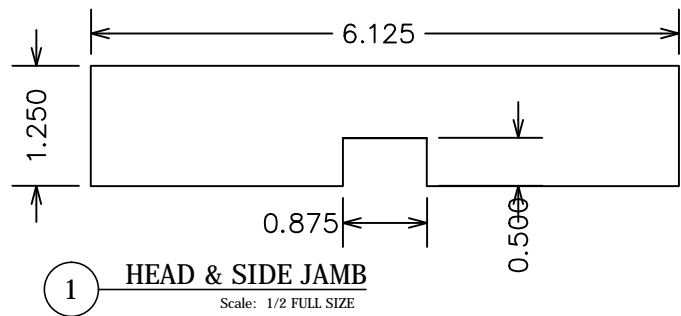
ENGINEER

REVISIONS	ISSUE	DATE	ISSUE NOTES

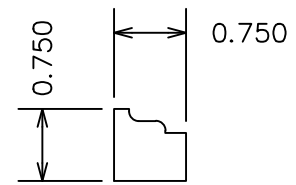
DRAWN BY: DATE
12/02/16

DRAWING NO.

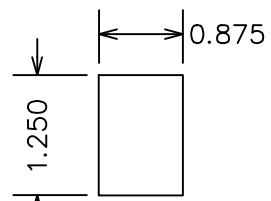
SHEET NO. 2 OF 4



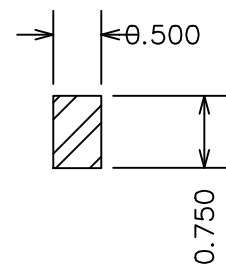
1 HEAD & SIDE JAMB
Scale: 1/2 FULL SIZE



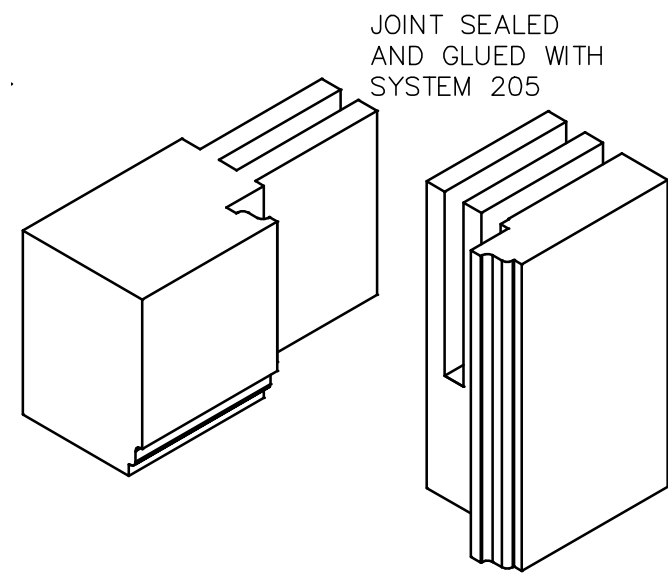
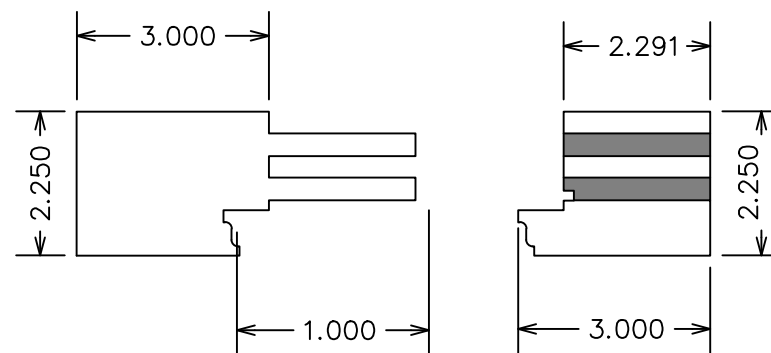
12 GLAZING BEAD
Scale: 1/2 FULL SIZE



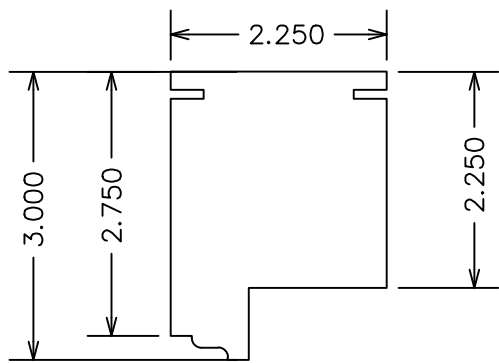
13 PARTING STOP
Scale: 1/2 FULL SIZE



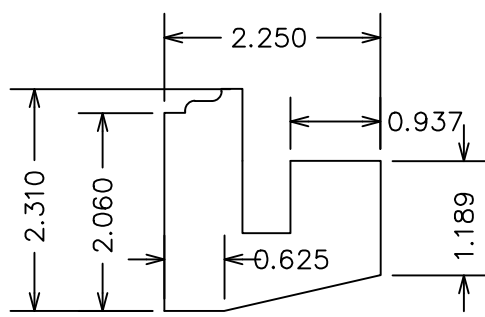
24 SASH REINFORCING
Scale: 1/2 FULL SIZE



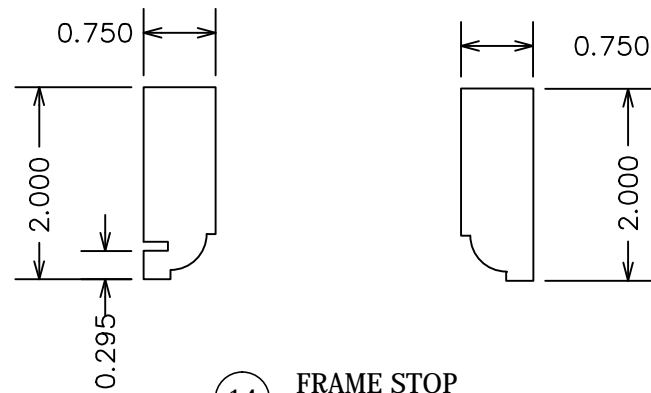
SASH 3 FINGER JOINT



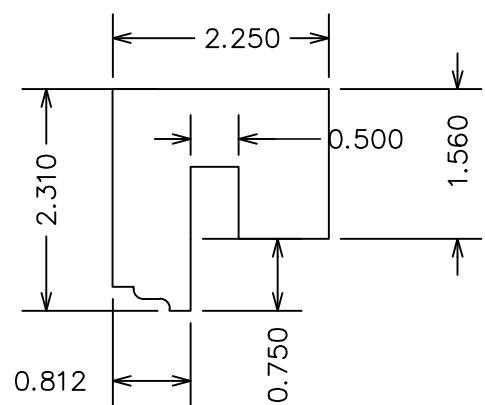
3 TOP RAIL (TOP SASH)
Scale: 1/2 FULL SIZE



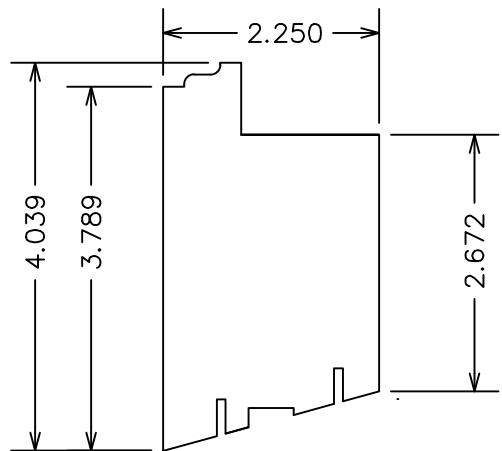
4 BOTTOM RAIL (TOP SASH)
Scale: 1/2 FULL SIZE



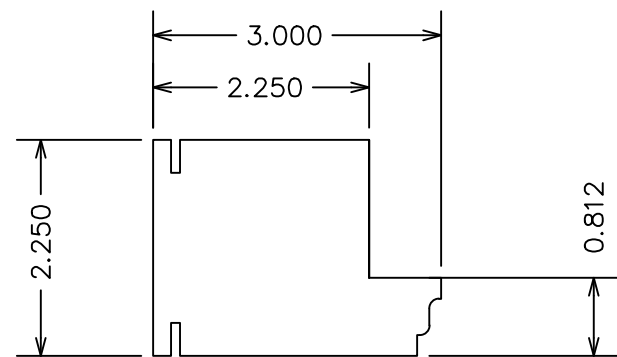
14 FRAME STOP
Scale: 1/2 FULL SIZE



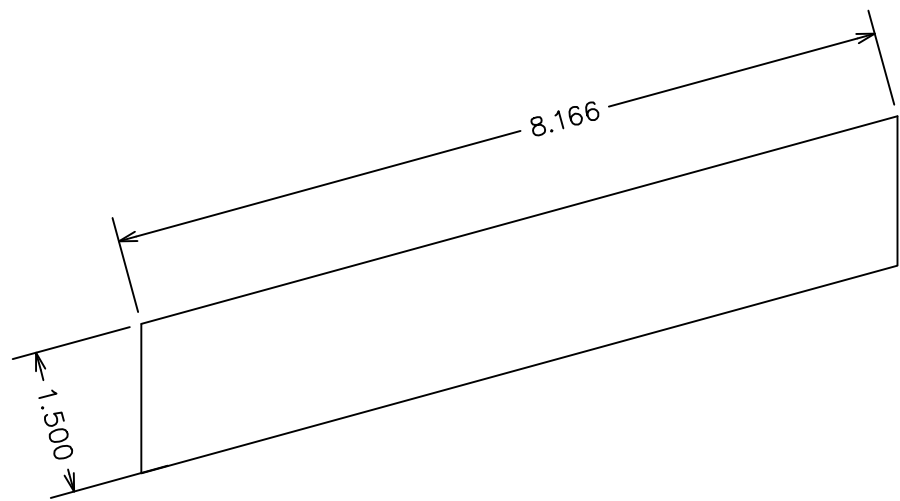
5 TOP RAIL (BOTTOM SASH)
Scale: 1/2 FULL SIZE



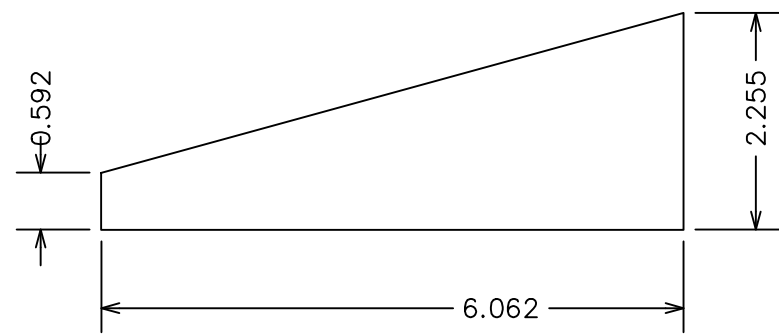
6 BOTTOM RAIL (BOTTOM SASH)
Scale: 1/2 FULL SIZE



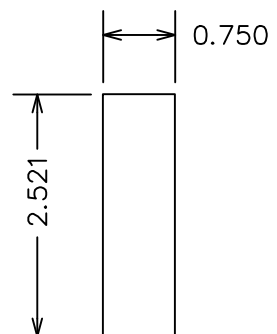
7 STILE (TOP AND BOTTOM SASH)
Scale: 1/2 FULL SIZE



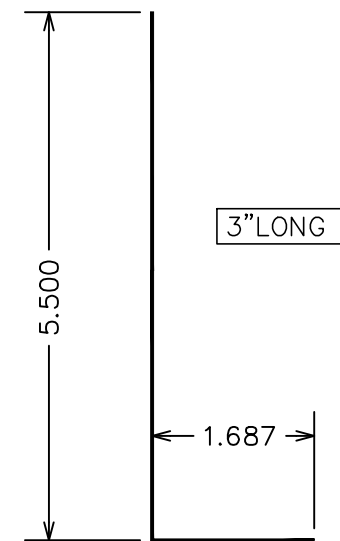
2 SILL
Scale: 1/2 FULL SIZE



10 SUB SILL
Scale: 1/2 FULL SIZE

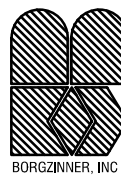


11 SILL STOP
Scale: 1/2 FULL SIZE



20 ATTACHMENT CLIP
Scale: 1/2 FULL SIZE

MANUFACTURER



BORGZINNER, INC

1160 W 13TH ST, UNIT 10
RIVIERA BEACH, FL 33404
PH. (561) 848-2538 ● FAX (561) 844-0011
<http://www.borgzinner.com>

CERTIFICATION

WOOD SINGLE HUNG WINDOW

ENGINEER

REVISIONS	ISSUE	DATE	ISSUE NOTES

DRAWN BY: DATE
12/02/16

DRAWING NO.

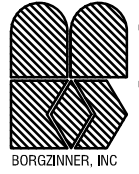
SHEET NO. 3 OF 4

NO.	ITEM DESCRIPTION	MATERIAL / MANUFACTURER
1	SIDE AND HEAD JAMB	SAPELE WOOD
2	SILL	SAPELE WOOD
3	TOP SASH TOP RAIL	SAPELE WOOD
4	TOP SASH BOTTOM RAIL	SAPELE WOOD
5	BOTTOM SASH TOP RAIL	SAPELE WOOD
6	BOTTOM SASH BOTTOM RAIL	SAPELE WOOD
7	STILE (TOP AND BOTTOM SASH)	SAPELE WOOD
8	PARTING STOP (BOTTOM SASH)	SAPELE WOOD
9	PARTING STOP (TOP SASH)	SAPELE WOOD
10	SUB SILL	SAPELE WOOD
11	SILL STOP	SAPELE WOOD
12	GLAZING BEAD	SAPELE WOOD
13	PARTING STOP	SAPELE WOOD
14	FRAME STOP	SAPELE WOOD
15	LOCK	WLS9U-US26D BRASS LOCK
16	LOCK KEEPER	WLS9U-US26D BRASS LOCK KEEPER
17	WEATHER SEAL	SCHLEGEL QL-3037
18	NO. 10 X 3" S.S WOOD SCREWS	STARTING 3" FROM ENDS THEN 12" MAX O/C
19	18GA X 1 1/2" BRAD NAILS	STARTING 2" FROM ENDS THEN 8" MAX O/C
20	16GA X 3" LONG S.S ATTACHMENT CLIPS	SPACING AS SHOWN ON ELEVATION

NO.	ITEM DESCRIPTION	MATERIAL / MANUFACTURER
18	NO. 10 X 3" S.S WOOD SCREWS	STARTING 3" FROM ENDS THEN 12" MAX O/C
19	18GA X 1 1/2" BRAD NAILS	STARTING 2" FROM ENDS THEN 8" MAX O/C
20	16GA X 3" LONG S.S ATTACHMENT CLIPS	SPACING AS SHOWN ON ELEVATION
21	BALANCE	BLAINE ULTRA - LIFT BALANCE
22	#8 X 1" S.S PAN HEAD SCREWS	(2) PER CLIP
23	GLASS	7/16" LAMINATED, (3/16" AN/0.075" SAFLEX/3/16"
24	S.S REINFORCING FOR SASH	AT TOP AND BOTTOM SASH

ALL WOOD SHALL BE SG=0.46 (E=1,600,00 PSI)

MANUFACTURER



BORGZINNER, INC

1160 W 13TH ST. UNIT 10
RIVIERA BEACH, FL 33404
PH. (561) 848-2538 FAX (561) 844-0011
<http://www.borgzinner.com>

CERTIFICATION

WOOD SINGLE HUNG WINDOW

ENGINEER

REVISIONS

ISSUE	DATE	ISSUE NOTES

DRAWN BY: DATE
12/02/16

DRAWING NO.

SHEET NO. 4 OF 4